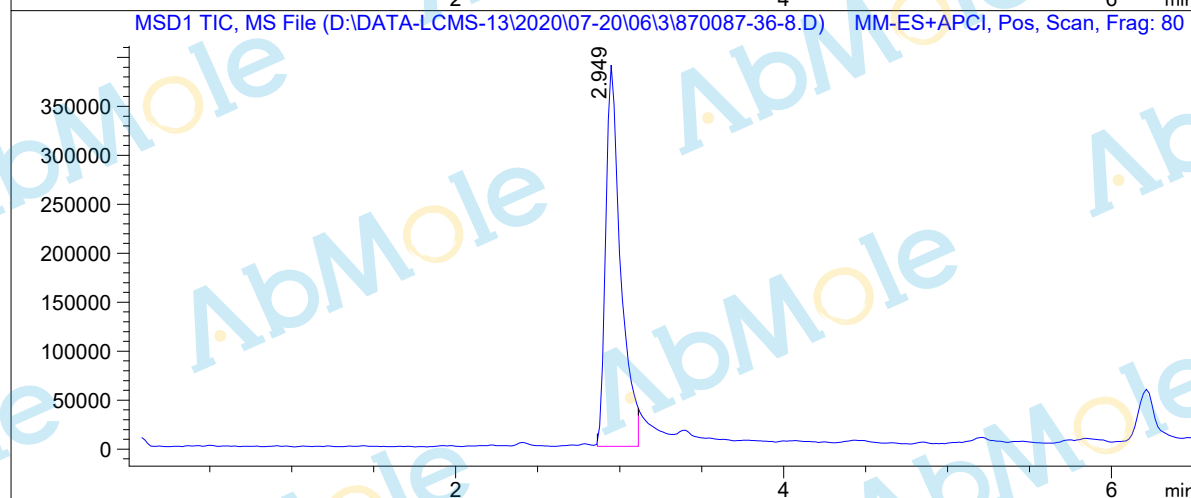
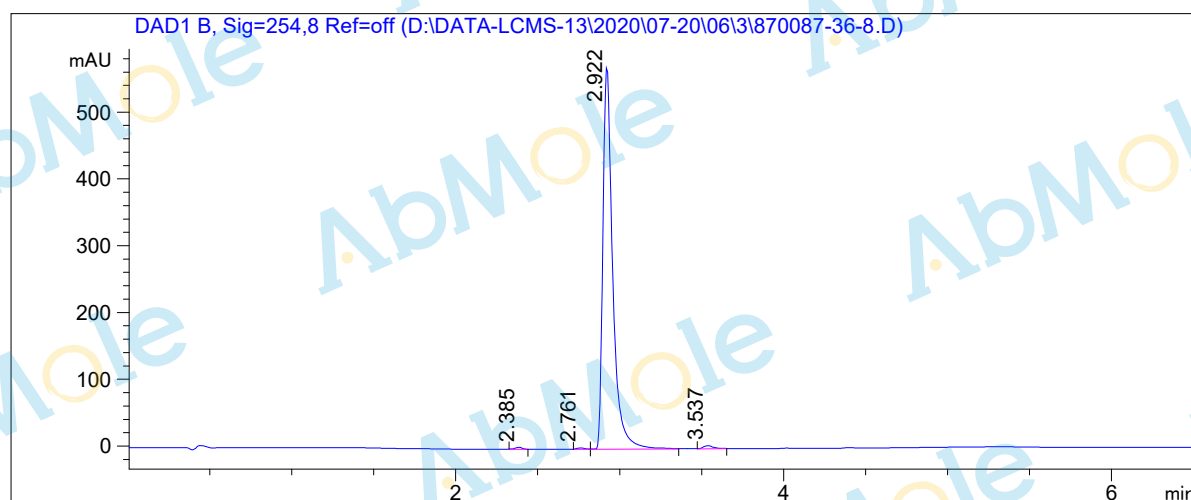


LCMS Report

Sample Name : Apilimod mesylate-01
Data File : D:\DATA-LCMS-13\2020\07-20\06\3\870087-36-8.D
Injection Date : Mon, 6. Jul. 2020 Inj. Vol. : 2ul
Acq Operator : LCMS-13 Location : Vial 51
Acq. Method : D:\data-lcms-13\2020\07-20\06\3\P-05-95-TFA.M
Method Info. : column:Xbridge C18 5um 4.6*50mm ;mobile phase:B (ACN)
A(0.05%TFA) ; gradient(B%)!as Acq.Method above



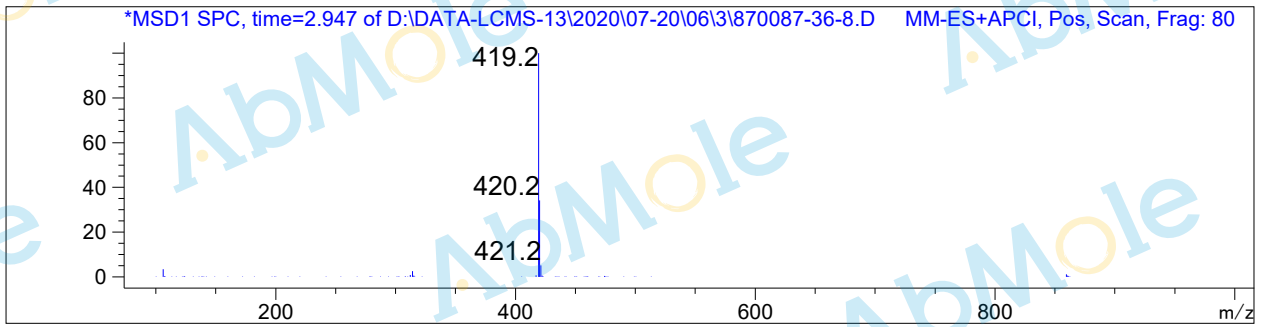
Integration Results

Signal 1: DAD1 B, Sig=254,8 Ref=off

#	R.T.	Type	Height	Height%	Width	Area	Area %
1	2.385	FM	2.870	0.492	0.052	8.877	0.365
2	2.761	FM	2.093	0.359	0.051	6.457	0.265
3	2.922	VB	573.692	98.365	0.063	2396.541	98.528
4	3.537	MF	4.574	0.784	0.075	20.464	0.841

Signal 2: MSD1 TIC, MS File

#	R.T.	Type	Height	Height%	Width	Area	Area %
1	2.949	MF	393745.625	100.000	0.105	2.492e+006	100.000



*** End of Report ***